



The Lacket User Instruction Manual



The Lacket Company
www.lacket.com.au

Introduction to the Lacket	3
Getting to Know the Lacket	4
Installing the Lacket to Your Ladder	5
Securing Your Ladder with the Lacket	8
Packing Away Your Ladder with the Lacket	10
Removing the Lacket from Your Ladder	11

Prefer to watch a short video that explains how to install and use the Lacket?

Visit us at www.lacket.com.au/#productsupport



Introduction to the Lacket

Thank you for purchasing the Lacket: the ladder safety product that will secure your ladder from slipping sideways or falling backwards vertically. When installed correctly, the Lacket allows your ladder to be locked into position using any overhang, *before you climb your ladder*.

Installation of the Lacket on the ladder is recommended prior to climbing the ladder, or placing the ladder against the structure being accessed.

Please read the following instructions carefully to ensure the Lacket has been installed correctly. If you have any questions about how to use the Lacket, please contact us. We're always happy to help.

Although the Lacket can be used on many different styles of extension ladders, the Lacket has been designed for use only on extension ladders that comply with Australian standards (AS/NZS 1892.5:2000). Most state authorities issue regulations regarding the safe use of ladders. Ensure you use the Lacket within these regulations. Contact your state authority to obtain a copy of these regulations.

WARNING

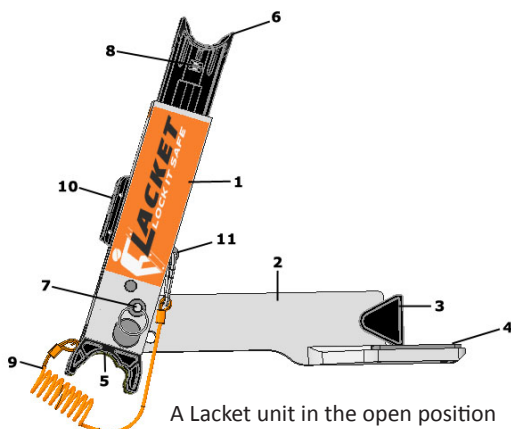
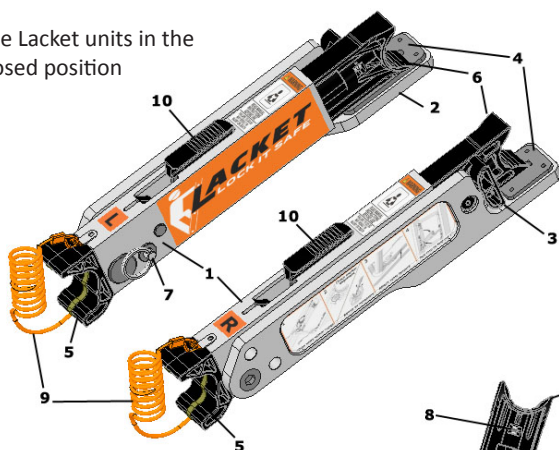
- Prior to each use, carefully inspect both units of the Lacket (left-hand and right-hand). If either unit has any defects, take it out of service immediately.
- Always use the Lacket on a ladder that is on a firm, level surface.
- These instructions must be provided to the user of this product.
- Manufacturer's instructions must be followed for proper use of this product. Alterations or misuse of this product or failure to follow instructions may result in serious injury or death.

Getting to Know the Lacket

Getting to Know the Lacket

The Lacket is comprised of two identical units: a left-hand and a right-hand unit with a top and bottom aspect. Each unit has the following features:

The Lacket units in the closed position



A Lacket unit in the open position

- | | |
|-----------------|--------------------------------|
| 1. Main body | 7. Indexing pull pin |
| 2. Fold out arm | 8. Clamp indicator |
| 3. Angled rest | 9. Cable lanyard and carabiner |
| 4. Buffer pad | 10. Clamp lever (lever at top) |
| 5. Lower strut | 11. Clamp lever securing hole |
| 6. Upper strut | |

Installing the Lacket to Your Ladder

The Lacket is comprised of two units (left-hand and right-hand) that must always be used together. Do not attempt to secure your ladder using only one unit - your ladder will not be secured into position if both units are not correctly installed.

Installing each unit is simple, by following these steps:

- A. Locate the Lacket unit that is clearly marked with an L. This is the unit that is to be installed on the left-hand side of the climbing side of the ladder. Ensure the Lacket is in the closed position.
- B. Identify the rung position that is closest to the point where the Lacket will receive the eave or structure. This can be done by placing the ladder against the building or structure, or estimating the rung position. Note that correct ladder procedure should be maintained as per the safety standards for safe use of ladders.
- C. The Lacket is designed with adjustable clamps to be customised to your ladder. With the ladder horizontally on the ground with the climbing side facing upward, pull the clamp lever out fully on the left-hand unit. See Image 1.
- D. With the clamp lever facing you, position the left-hand unit within the ladder rungs identified in Step B, against the left-hand stile. An approximately 3mm gap should be maintained between the unit and the stile. The upper strut should be placed on the upper rung, and the lower strut placed on the lower rung (see Image 2).
- E. When the unit has been correctly positioned, start to close the clamp

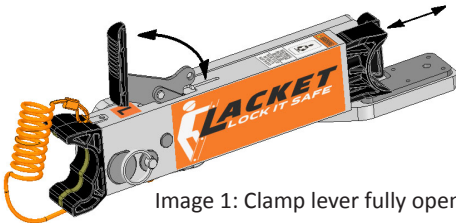


Image 1: Clamp lever fully open

Image 2: The Lacket positioned between upper and lower rungs of ladder



Installing the Lacket to Your Ladder

lever which will extend the upper strut towards the upper rung of the ladder. While closing the clamp lever, watch the movement of the black line on the clamp indicator. The black line needs to be lined up with the indented markers on the clamp indicator when the upper strut and lower strut is firmly engaged with each rung, and the clamp lever is fully closed. See Image 3a for an example of the clamp indicator correctly lined up.

- a. If the black line begins to move beyond the indented markers before the clamp lever is fully closed (see Image 3b), you will need to adjust the upper strut using the adjustment screw. Using a flathead screwdriver, turn the adjustment screw (see Image 4) clockwise to reduce the length of the exposed upper strut. This may require several adjustments to line the marker up correctly.

- b. If the clamp lever is fully closed but the black line has not yet lined up with the indented markers (see Image 3c), you will need to adjust the upper strut using the adjustment screw. Using a flathead screwdriver, turn the adjustment screw (see Image 4) anti-clockwise to increase the length of the exposed upper strut. This may require several adjustments to line the marker up correctly.

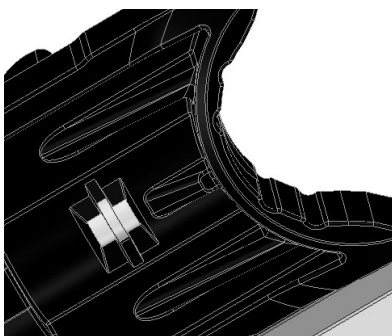


Image 3a: Indicator correctly lined up

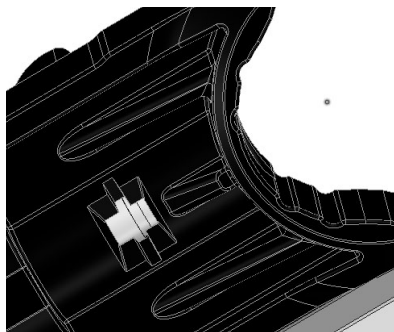


Image 3b: Adjustment too tight

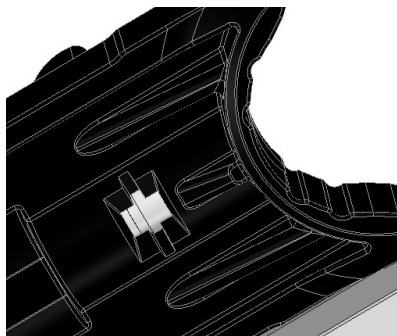


Image 3c: Adjustment too loose

- F. The left-hand unit is now installed. It should feel firm between the rungs and be parallel with the ladder stiles.
- G. The final step to installing the unit is to attach the cable lanyard. The cable lanyard wraps around the lower ladder rung to ensure the unit stays attached to the ladder, as well as locking the clamp lever to ensure against accidental release. Wrap the lanyard around the lower ladder rung.
- H. Feed the carabiner through the clamp lever securing hole (see Image 5).
- I. Locate the Lacket unit that is clearly marked with an “R” for the right-hand unit. Repeat the above Steps B - H for the right-hand unit.
- J. See Image 6 for an example of a correctly installed unit.

Image 4: Adjustment screw

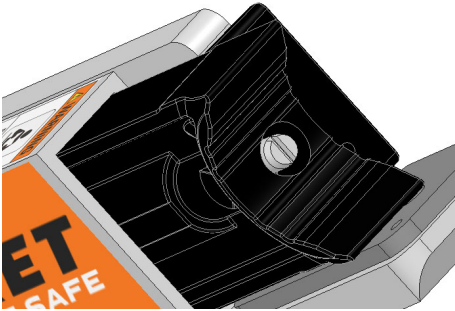


Image 5: Carabiner correctly placed through clamp lever securing hole

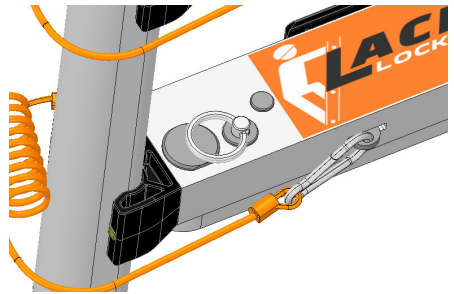


Image 6: The Lacket correctly installed with cable lanyard attached

Securing Your Ladder with the Lacket

Securing Your Ladder with the Lacket

Before securing your ladder into position using the Lacket, the correct location for your ladder needs to be determined. The Lacket will secure a ladder against any building or structure where an eave, structural ledge or overhang exists.

When both units of the Lacket have been correctly installed to your ladder (see the previous section: Installing the Lacket to your Ladder), the following steps will secure your ladder into position:

- A. With the ladder still on the ground, extend both left side and right side fold out arms out by pulling the indexing pull pin on each unit (see Image 7). The fold out arms are fully extended when the indexing pull pin retracts into the indexing pin hole.
- B. Lift the ladder and extend to the required location on the building or structure. Ensure that the angled rest and buffer pad receives the corner of the eave or overhang (see Image 8).
- C. Push the base of the ladder feet towards the building or structure, until the ladder feels firm. This will enable the Lacket to lock the ladder into position.

Image 7: Fold out arms fully extended

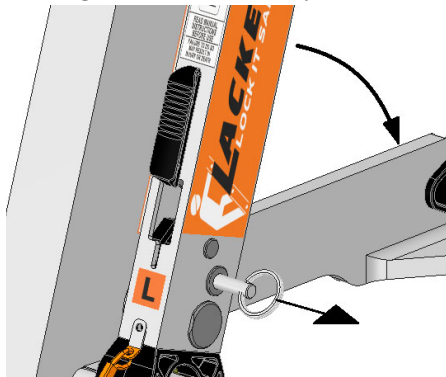


Image 8: The Lacket correctly positioned against an eave



- D. The base of the ladder must be secured to ensure effective use of the Lacket. Good ladder safety means you should always use a ladder on a level, immovable surface. The following are examples of solutions for securing the base of the ladder whilst using the Lacket to secure the top:
- Place a weighted object (such as a 20kg sandbag, bag of concrete etc) at the base of the ladder.
 - Stabilise the feet of the ladder through the use of a ladder feet stabiliser or ladder leveller etc.
 - Tie off to a ground peg. We have supplied two 4m cam-buckle straps so the operator can secure the base of the ladder.
 - Tie off to a weighted object (greater than 20kgs), using the supplied 4m cam-buckle straps. The weighted object could be a bag of cement, a bag of sand etc.
 - Tie off to any fixed structure. (See Image 9 for an example.)



Image 9: Orange ties are used to secure the base of the ladder

Packing Away Your Ladder with the Lacket

Follow these simple steps to remove your ladder once it has been secured by the Lacket:

- A. Remove the orange tie straps from the base of the ladder.
- B. Pull the ladder feet slightly away from the building or structure to disengage the Lacket from the eave or overhang.
- C. Detract the ladder as usual.
- D. Pull the indexing pull pin and return the fold out arms to the closed position.
- E. See Image 10 for an example of the Lacket folded away on a detracted ladder, for transportation or storage.



Image 10: The Lacket folded away and ladder ready for transportation or storage

Removing the Lacket from Your Ladder

The Lacket has been designed to stay installed on your ladder during ladder transportation and storage. However, if you wish to remove the Lacket from your ladder or relocate it to another rung location, simply follow these steps:

- A. Unhook the carabiner from the clamp lever securing hole. This will release the cable lanyard from being hooked around the lower ladder rung.
- B. Pull the clamp lever open (see Image 1). This will retract the upper strut and the Lacket will be free to be removed.
- C. Remove the left-hand side and right-hand side units from your ladder rungs.

Prefer to watch a short video that explains how to install and use the Lacket?

Visit us at www.lacket.com.au/#productsupport



This work is copyright. Apart from any use permitted under the Copyright Act 1968, no part may be reproduced by any process, nor may any other exclusive right be exercised, without the permission of:

The Lacket Company

PO Box 3127

Minnamurra NSW 2533

Australia

© May 2019